

Guideline for volunteers

The Dog Care Clinic

In 2007 Marina Möbius founded the Dog Care Clinic in Mihiripenna in southern Sri Lanka. Our main focus is on comprehensive castration and vaccination of street and owner dogs, the treatment of sick and injured animals, the feeding and care of strays and dogs of poor owners as well as the adoption of abandoned puppies and disabled dogs.

In addition, up to 400 dogs live on our large and very lovingly landscaped premises, some of which cannot be placed and many of which need medication every day. We also care for more than 20 ungulate.

Not only do we care about the animals, but also the poor people of Sri Lanka and so we pursue programs in which we combine animal welfare with help for poor and old people in a unique and innovative way. In a country like Sri Lanka, there is still a lot of educational work to be done, so good contact with the people in the vicinity of the clinic is important to us.

In order to carry out the diverse projects of the clinic in a sustainable and professional manner, the Dog Care Clinic now employs 80 people and works 365 days a year.



Your volunteering experience

Arrival and departure

Airport pick-up and drop will be arranged by us and is already included in the booking price. The transfer is done by an authorized driver who will take you directly to your accommodation.

Daily routine and tasks

Please note: since we have to deal with emergencies and intensive care cases every day in the clinic, the daily routine varies from day to day. You will be assigned to your duties as needed and according to your interests and skills.

Your activities will include:

- Dog feeding and preparation of the feed
- Spending time with the dogs (playing, petting, handing out treats)
- Grooming (brushing/washing)
- Nail care
- Ear care
- Removing of parasites, e.g. ticks and further skin care
- Assisting in drug administration
- Caring for the puppies, intensive care patients and severely disabled dogs
- Participation in the daily feeding tour and the regular dog visiting tours



Start and finish of work depends on the shift in which you are assigned. The daily working time is seven hours. You have two days off a week, which are determined at site. Lunch is included in the price on working days.

1. Vorstand - Marina Möbius
2. Vorstand - Susanna Wellmann
Vereinsregister Nr.- VR 601335
Amtsgericht Freiburg Breisgau / Germany

Unser Spendenkonto:
Swiftcode / BIC SOLADES1VSS
IBAN DE67694500650150969221
www.dogcare-clinic.com

On-site support:

On your first day at the clinic you will be given a detailed tour of the DCC grounds and get to know the Dog Care Clinic, the team and our dogs.

We will also organize a tuktuk ride during the first week of your stay, where we show you the most important things in the area, such as supermarkets, ATMs and things to do. This is also included in the price.

Our team will accompany you through your time at DCC. For all matters that you do not want to discuss on site, we also have a contact person for you in Germany.

Accommodation

Accommodation is in one of our modern apartments. We prefer to accommodate you in our volunteer house, the "Grumpy Modos" (cf. pictures on the next page). There you have your own bedroom and en-suite bathroom, a spacious palm garden to chill and read, and a fully equipped kitchen that you share with the other volunteers. Like this, you can enjoy your privacy as well as get in touch with other volunteers, students or animal welfare holidayers.

If the Grumpy Modos is occupied, we will place you in equivalent accommodation.

You also have the option to upgrade your accommodation and book yourself into our luxurious Rufus Tropical Garden. You can choose between two single beds (which is perfect if you volunteer with a friend) or one large double bed in our spacious double rooms. Each room has an en-suite bathroom with hot rain shower and bathtub. A fully equipped open-air kitchen allows you to prepare your meals. Choose between the palm-fringed garden or the roof terrace to unwind.

All apartments are cleaned weekly. Smoking is only permitted outdoors.

Air conditioning can be booked for 20 euros/week (included at Rufus Tropical Garden).

We would like to ask you to always keep leftovers in closed containers or in the refrigerator, to rinse the dishes after use and to bring the garbage to the clinic every day, otherwise ants, cockroaches and other vermin will be attracted.

When you check out please leave the room as you would like to find it. This means, for example, making the garbage available for collection. Do not leave leftovers in the fridge. You are welcome to give these to the other volunteers.

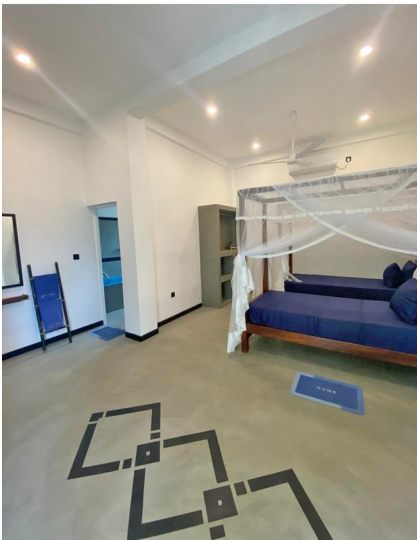
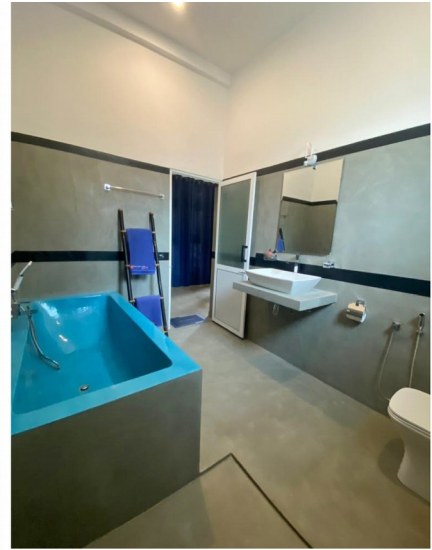
Grumpy Modo's:



1. Vorstand - Marina Möbius
2. Vorstand - Susanna Wellmann
Vereinsregister Nr.- VR 601335
Amtsgericht Freiburg Breisgau / Germany

Unser Spendenkonto:
Swiftcode / BIC SOLADES1VSS
IBAN DE67694500650150969221
www.dogcare-clinic.com

Rufus Tropical Garden:



Catering

On your working days you will get a Sri Lankan lunch from us. The typical dish is rice with different curries. We also have a staff kitchen with a fridge, kettle and microwave. You can also heat up or cool your own food. Fresh drinking water is sufficiently available for all employees.

In your accommodation you have a fully equipped kitchen and can cater for yourself. A supermarket and fruit and vegetable shops are just a few minutes' walk away. In Mihiripenna and the neighboring tourist town of Unawatuna there are also a variety of restaurants offering both Sri Lankan and Western dishes.

1. Vorstand - Marina Möbius
2. Vorstand - Susanna Wellmann
Vereinsregister Nr.- VR 601335
Amtsgericht Freiburg Breisgau / Germany

Unser Spendenkonto:
Swiftcode / BIC SOLADES1VSS
IBAN DE67694500650150969221
www.dogcare-clinic.com

What is expected from you

Our clinic is equipped according and managed to European standards and our vets receive regular training to be able to do qualified work. Who has ever been to Sri Lanka knows about the horrific situation of animals and how many dogs live miserably on the streets. For many dogs, but also other animals, the DCC is too often the last chance to be rescued, or at least to die in dignity.

We are very well equipped and thus may ensure the best possible care, even for intensive cases. Puppies are lovingly raised, treated and socialized.

The DCC is managed since 2007 with passion for animal welfare by our founder Marina Möbius. Hence, we are looking for dedicated, attentive, team-oriented and responsible students who wish to gain a lot of experience and knowledge for their future working with animals.

We are looking for committed, attentive, team-oriented and responsible young people. People who enjoy working with animals and want to support animal welfare. The animals are our main priority so responsibility and reliability are a MUST – if you are seeking a big party adventure the DCC is not the right place for you.

Please behave respectfully towards the team and the pet owners. We advise you to read about Sri Lankan culture and life before applying. We will also support you and we will have a chat prior to departure.

Please also keep in mind that you will see many injured and neglected animals. A good mental health is therefore essential.

Others

Clothing

Sri Lanka has tropical climate and we have temperatures around 30 degrees with high humidity on some days. Most of the time you will be working outdoors. Please make sure to bring enough sun protection with you. You will also need a light rain jacket and a (small) umbrella for rainy days.

Since Sri Lanka is a Buddhist country you should wear appropriate clothing. Most of our staff wear shorts (with a length approx. to the knees) and crocs or sandals. Hotpants will not be accepted.

It is important that your foot wear's sole has a good pattern as some of the floors become quite slippery when wet.

We provide DCC t-shirts which you can keep after completion of your volunteer work.

Off time

Mihiripenna is an idyllic village surrounded by lush paddy fields on one side and a nice beach on the other side. With a little bit of luck you can also spot great wild life such as peacocks and monkeys.

Thanks to its very convenient location you can reach Unawatuna within a few minutes by tuktuk. The beach is awesome and you have a great variety of restaurants. A few kilometers further up the coast lies Galle where the historic Fort is worth a visit. Several temples, tea plantations and more make for a great day-trip in your free time, too.

Booking and costs

The allowance for a four-week volunteering stay with accommodation at Grumpy Modo's is **€889.00**. If you want to upgrade to Rufus Tropical Garden a four-week placement is **€ 1,139.00** (for two people it is **€ 1,749.00**)

Please get in touch if you are interested in a shorter or longer stay.

If you have a friend who will share the accommodation with you but does NOT participate in our program we charge an additional € 80.00 per week.

The fee includes:

- comprehensive guidance before and during your stay
- airport pick-up and drop
- accommodation
- lunch on your workdays
- original DCC t-shirts
- certificate of your volunteer engagement
- unforgettable memories with our dogs and as part of the DCC family

With the limited number of participants, we recommend an early booking.

The booking form can be downloaded on our homepage.

Please note: a booking is binding and a (non-refundable) down-payment of 25 % is obligatory.

The remaining fee and a **deposit of € 250.00** have to be transferred by at least two weeks prior to departure.

**If you have questions or require further information,
you may reach our coordinator Bettina
by mail (info@dogcare-clinic.com) or
WhatsApp (+491781981722, Mo-Fr from 9am to 2pm CET)**

We are looking forward to having you at DCC!



Check out www.dogcare-clinic.com/en for more info

1. Vorstand - Marina Möbius
2. Vorstand - Susanna Wellmann
Vereinsregister Nr.- VR 601335
Amtsgericht Freiburg Breisgau / Germany

Unser Spendenkonto:
Swiftcode / BIC SOLADES1VSS
IBAN DE67694500650150969221
www.dogcare-clinic.com